

A Project of



Office No.1,  
Square One Mall,  
Main National Stadium Road.

☎ 0307 6231111

f One Developers

@ onedevelopers.pk

🌐 www.onedevelopers.pk



**Disclaimer:** One Signature Tower is constantly seeking ways to improve the design and specification of the project. All reasonable care has been taken in preparing the graphics and pictures herein but some detail may differ from the actual outcome.

1





# DEVELOPERS

One Developers has taken on the task of revolutionizing traditional real estate development in Pakistan. We prioritize our client's peace of mind as our growing portfolio of landmark projects focuses on sustainable timeless development, master planning and strict regulatory compliance.



DEVELOPERS OF  
**SQUARE ONE MALL**

Stadium Road, Gulshan e Iqbal



MISSION

To be a professional, innovative and fair company that delivers high quality developments benefitting millions of people.



VISION

To continue to create exceptional, international standard developments that exceed customer's expectations and improve their lifestyles.



## LOCATION

Minutes away from Rizvia Chowrangi, One Signature Tower offers its residents a central location in the heart of Karachi.



## WAITING AREA / LIFT LOBBY

A welcoming reception for you and your guests with 24-hour security and 4 lifts including a cargo lift.



## BEDROOM

Bedrooms designed for your comfort and a good nights' cozy sleep after a hard day of work.



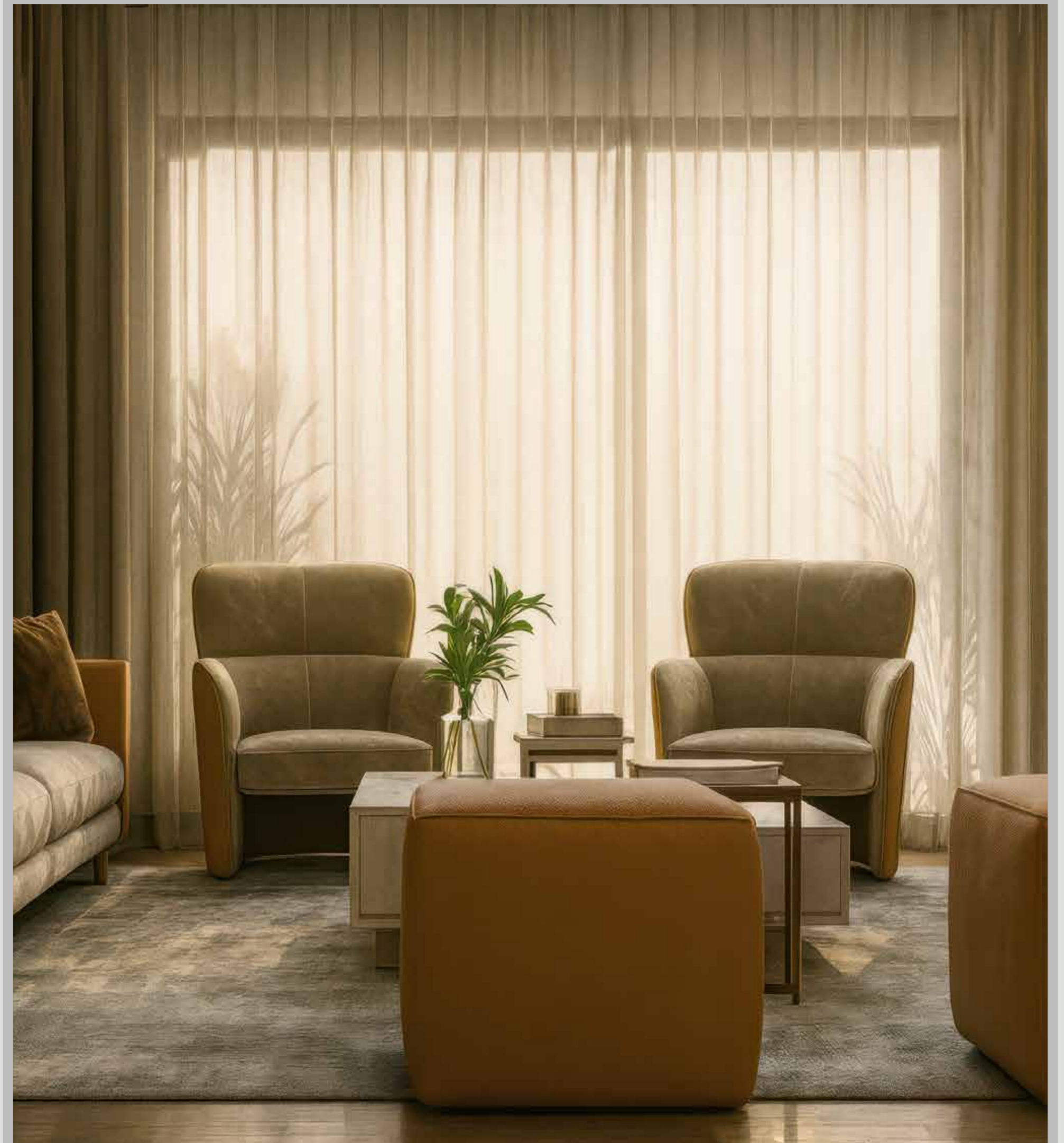
## BATHROOM

A luxurious and functional bathroom with high quality fittings.



## BALCONY

Being the tallest building in the area, the balcony will be a space to enjoy fresh air and watch Karachi's sunset.



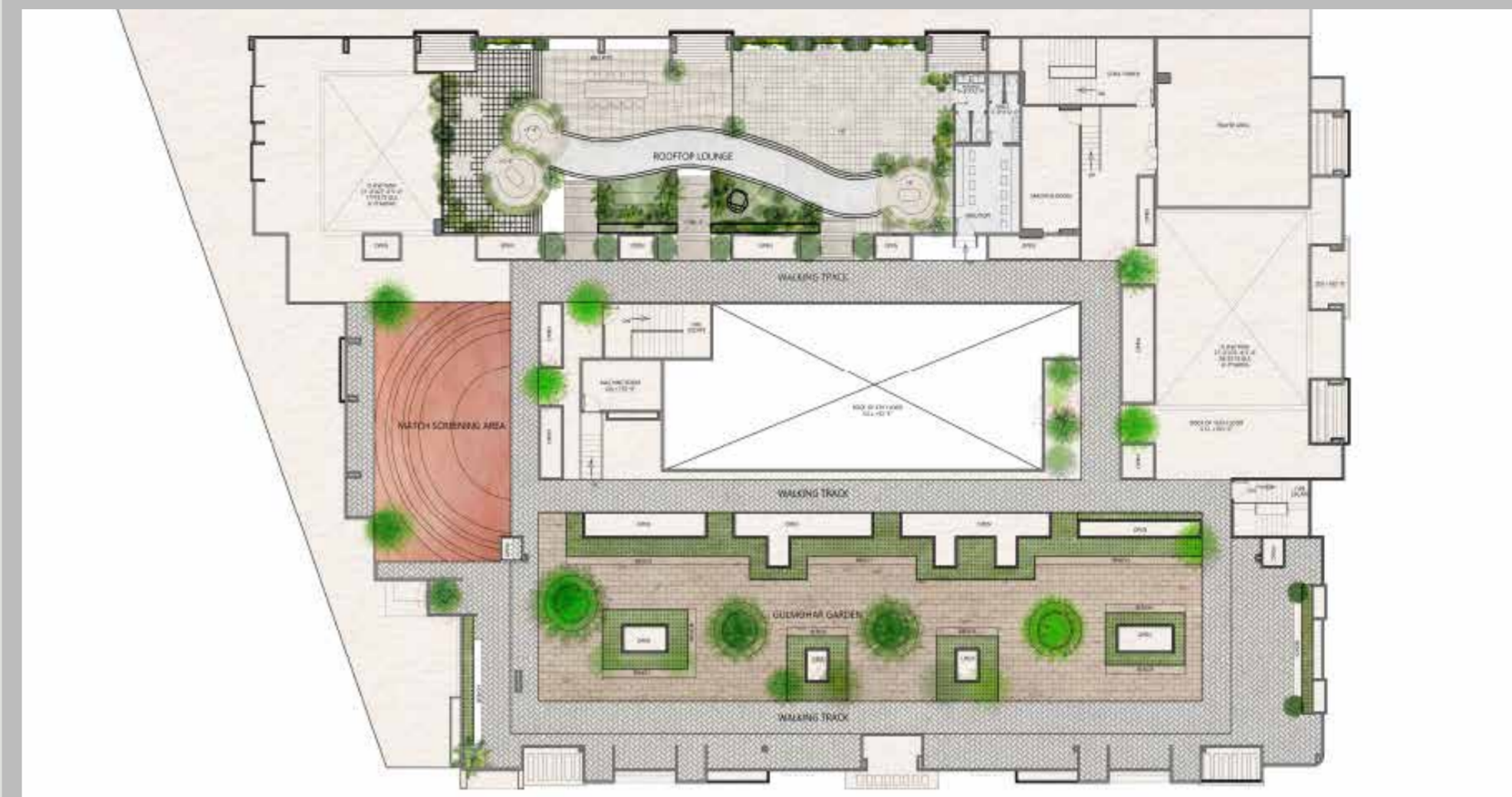
## LOUNGE

Whether it is to watch dramas or a have a pizza party during a thrilling cricket match, the spacious lounge will be at the center of the family.



### ROOFTOP GARDEN

A rooftop garden with comfortable lounges, a walking track and a match screening area all between lush green plants.



### ROOFTOP BBQ

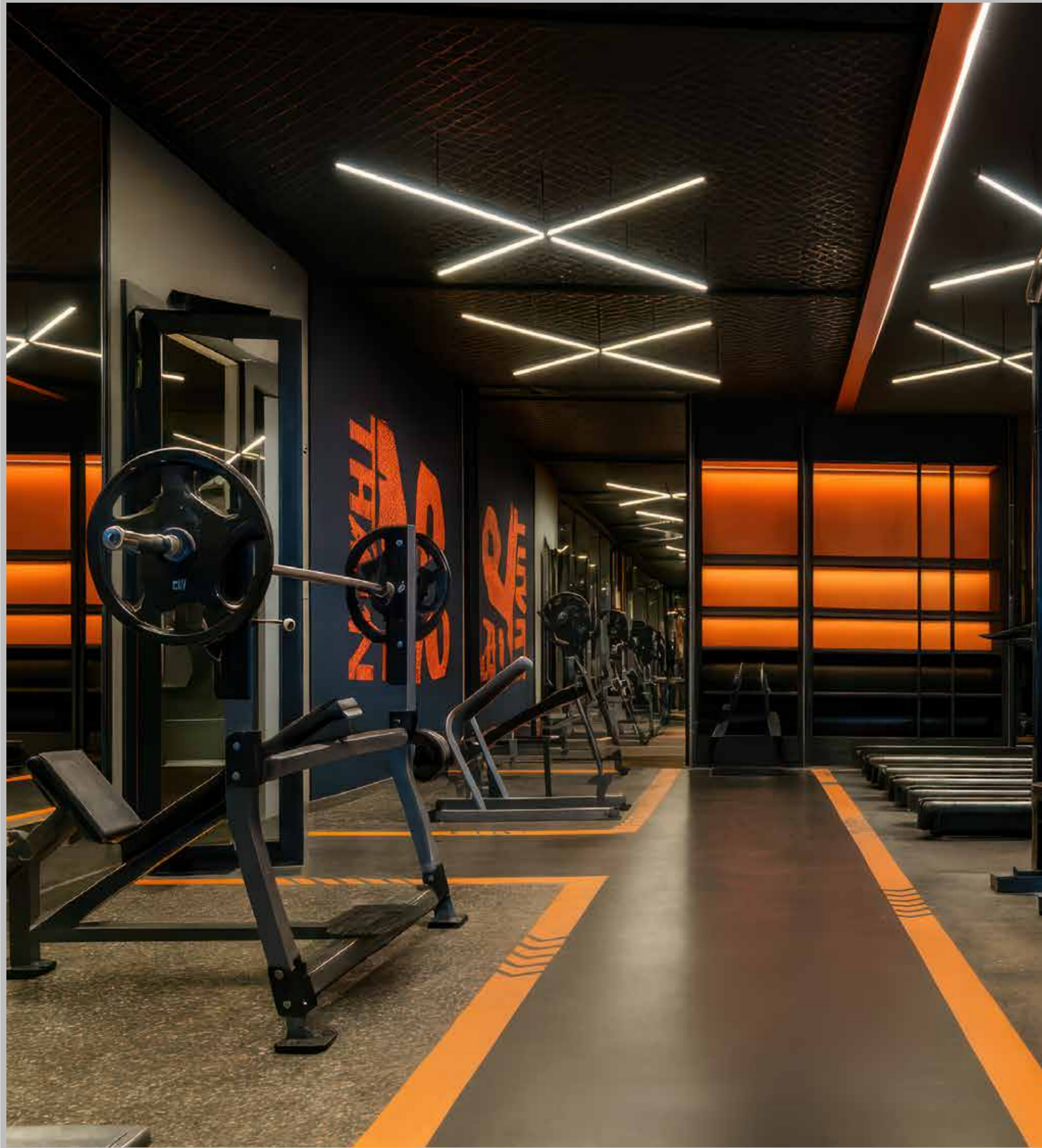
A perfect spot to enjoy starry nights, great food, and warm company. The essence of community living.



## RESIDENTS LOUNGE

A warm, inviting lounge designed to bring residents together in comfort and community.





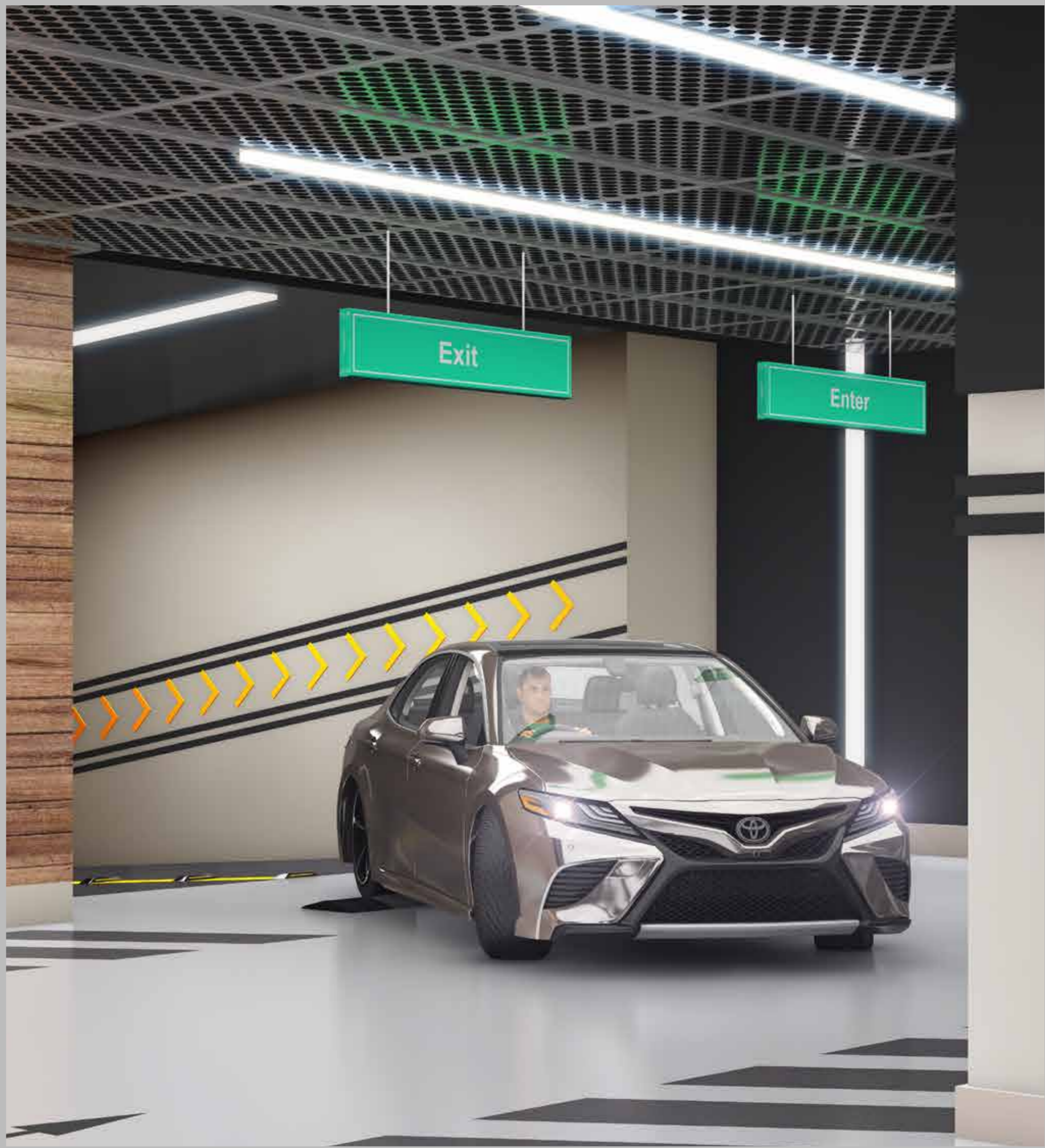
**GYM**  
Health comes first, to keep fit separate ladies and gents' gyms will be available to residents 24/7.



**KIDS ZONE**  
A dedicated space for a children's play area so that families won't have to leave the comfort of the project.



CONSTRUCTION  
rapidly progressing



PARKING  
Three-levels of Car Parking will be available  
which means one car parking space for each apartment.

## 2nd Typical Layout Plan

## 37'-6" Wide Road

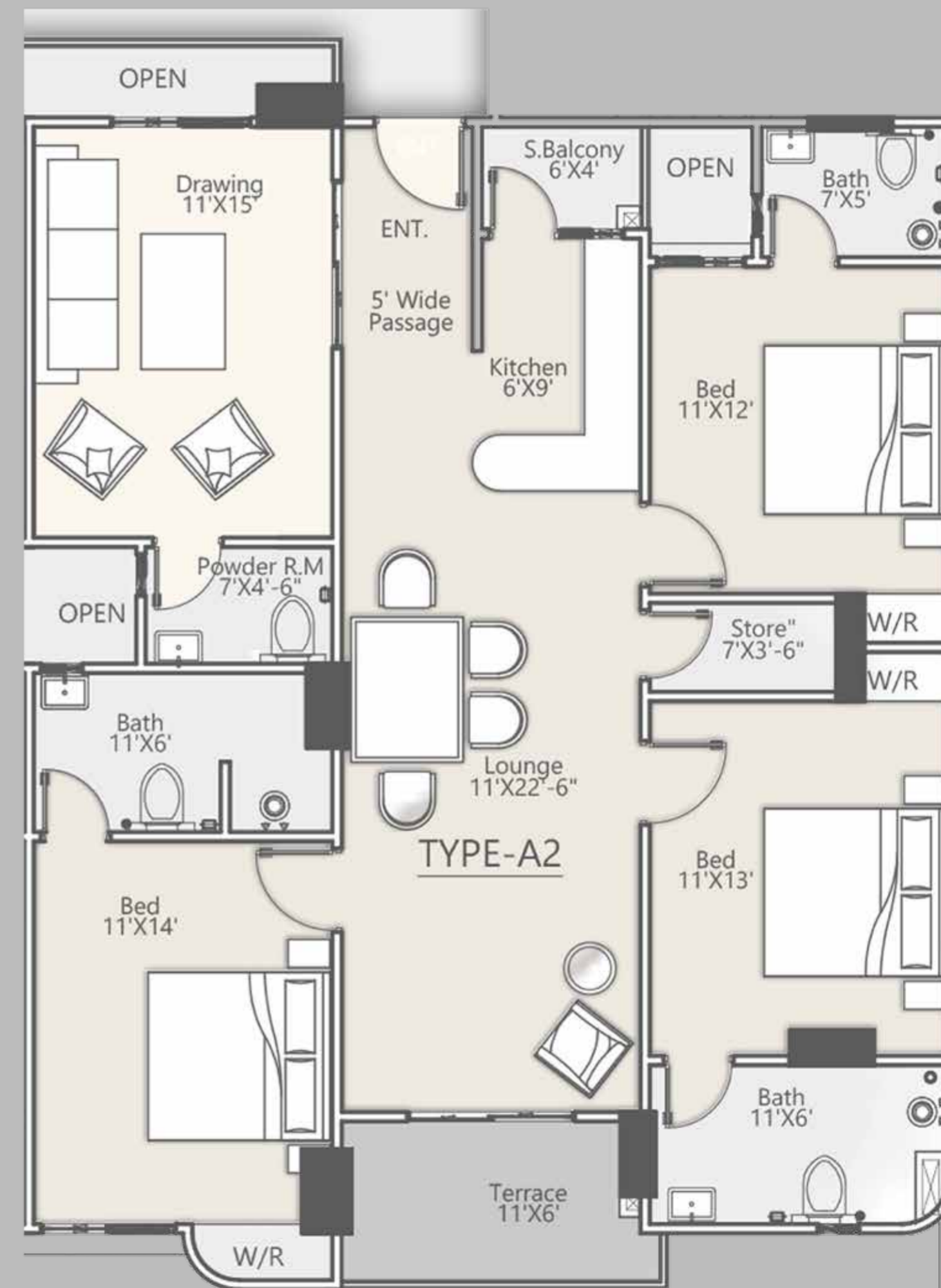


40'-0" Wide Road

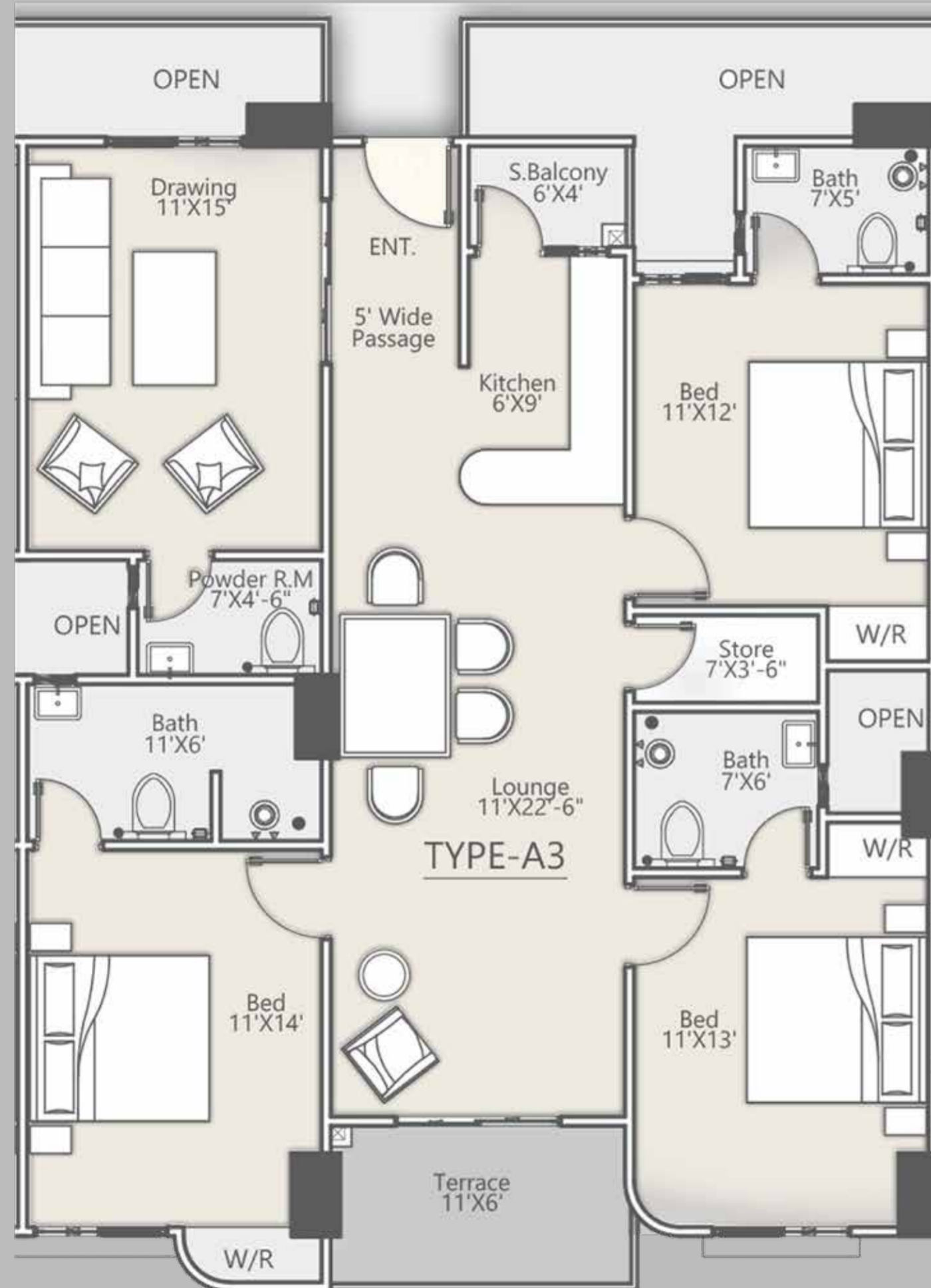
200" Main Altaf Ali Barelvi Road



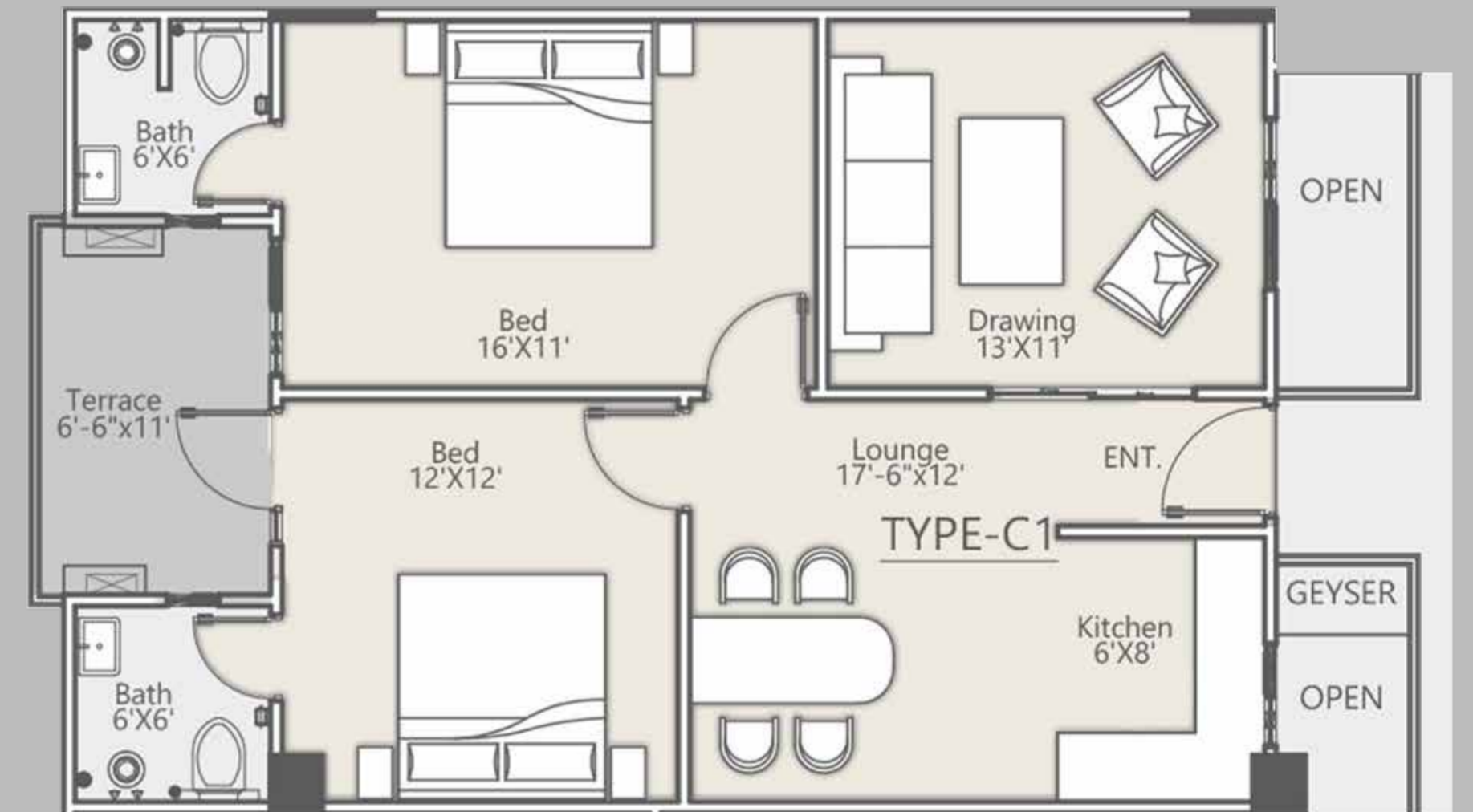
TYPE - A1



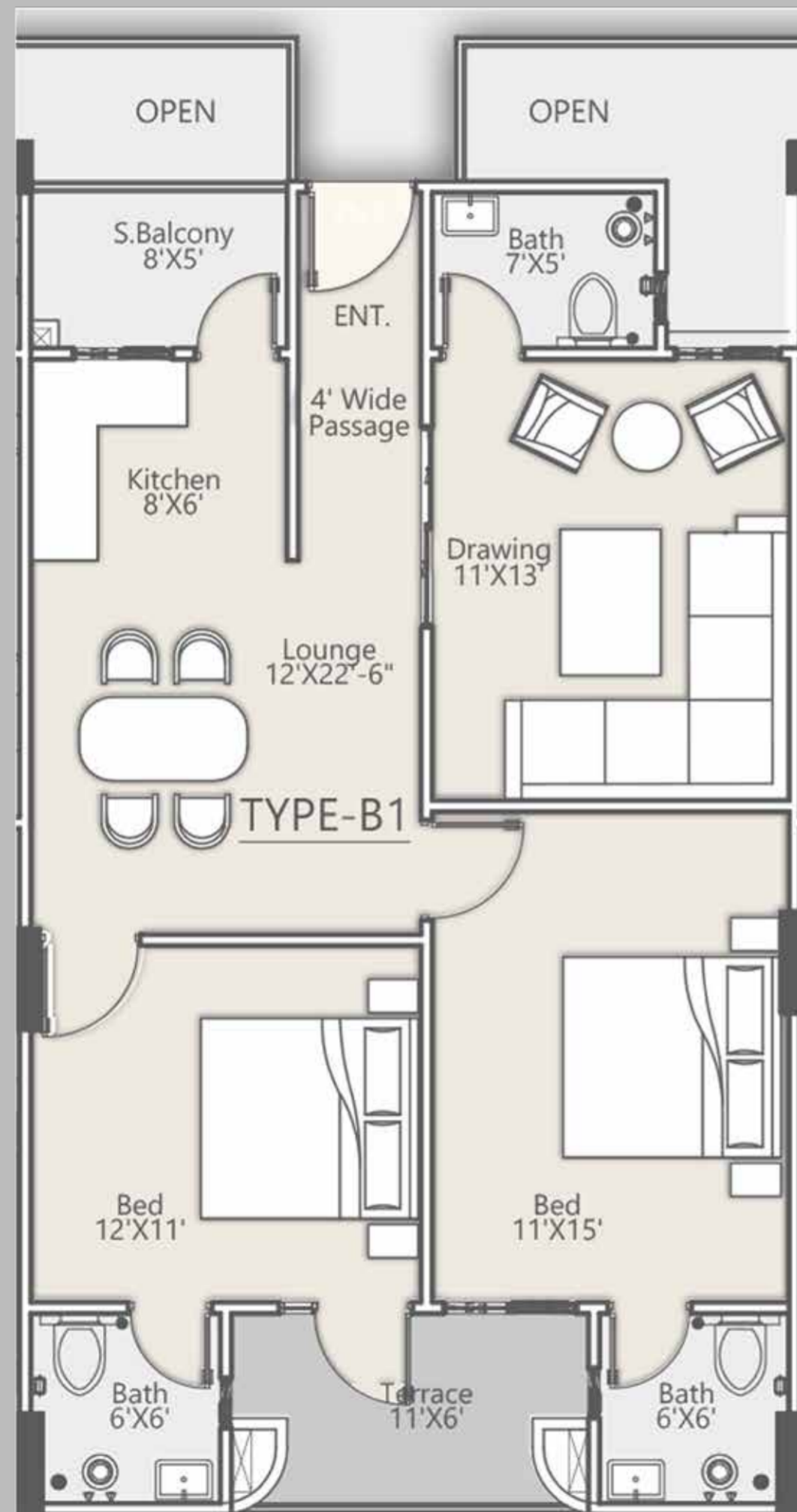
TYPE - A2



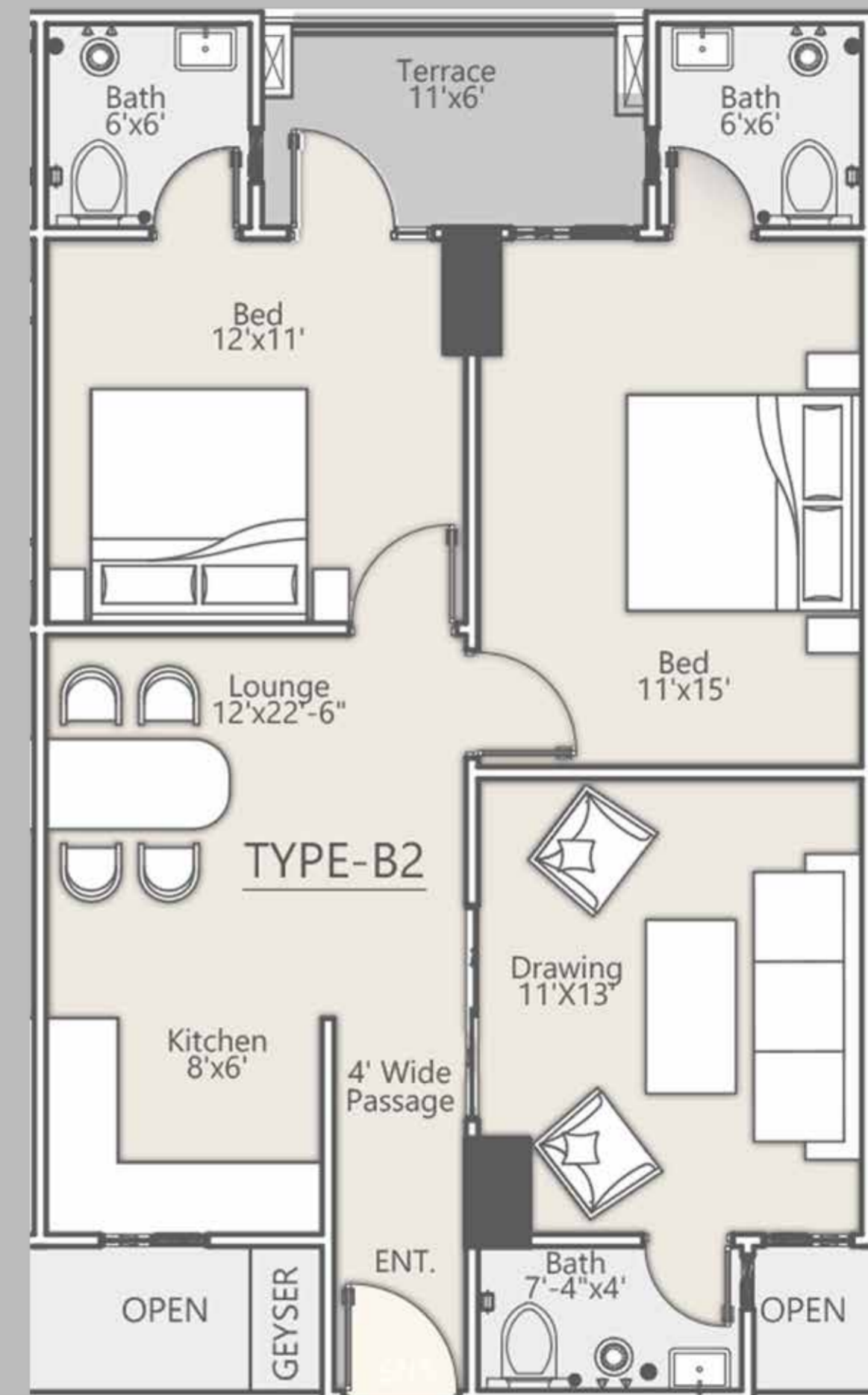
TYPE - A3



TYPE - C1



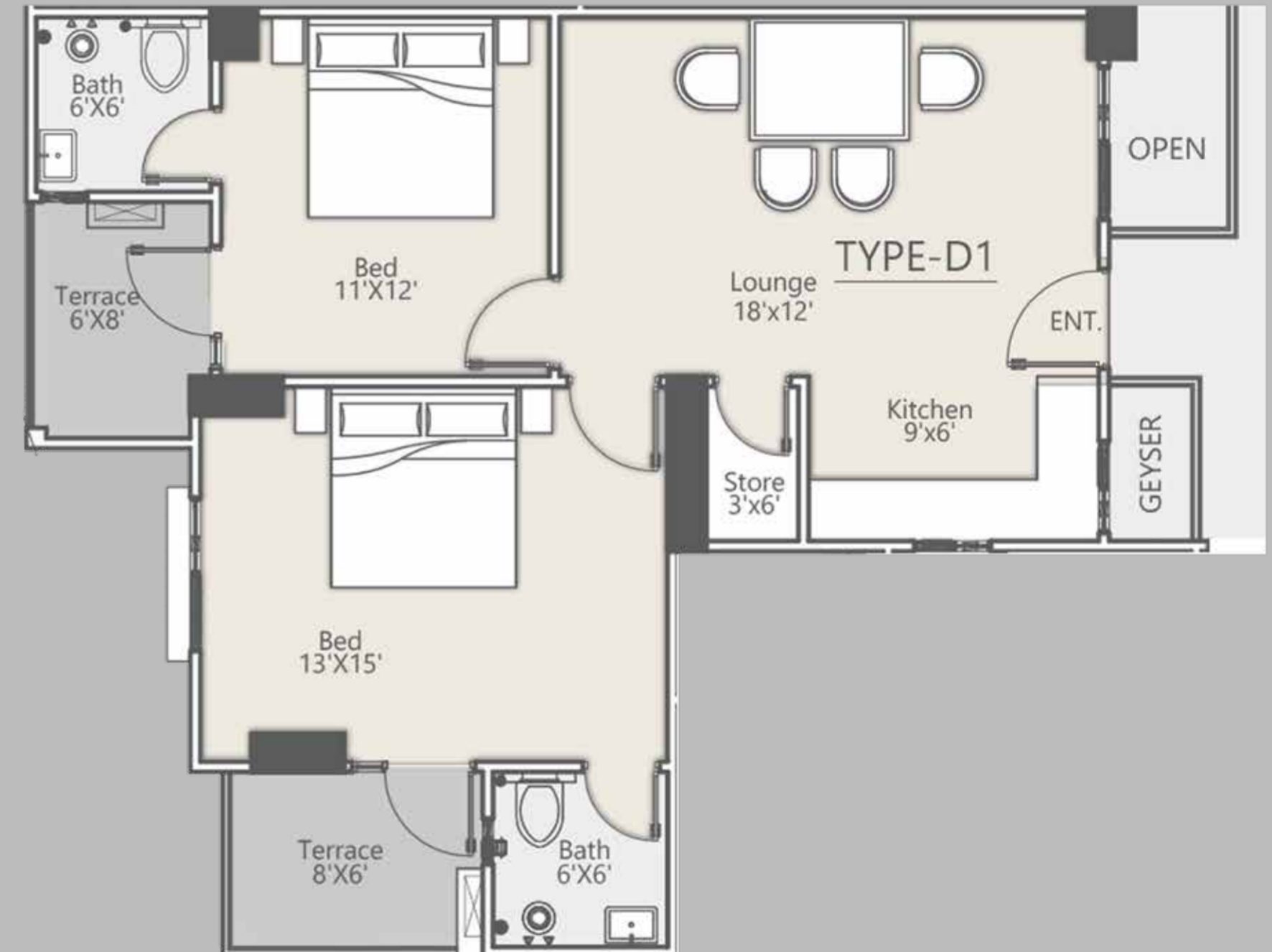
TYPE - B1



TYPE - B2



TYPE - B3



TYPE - D1